

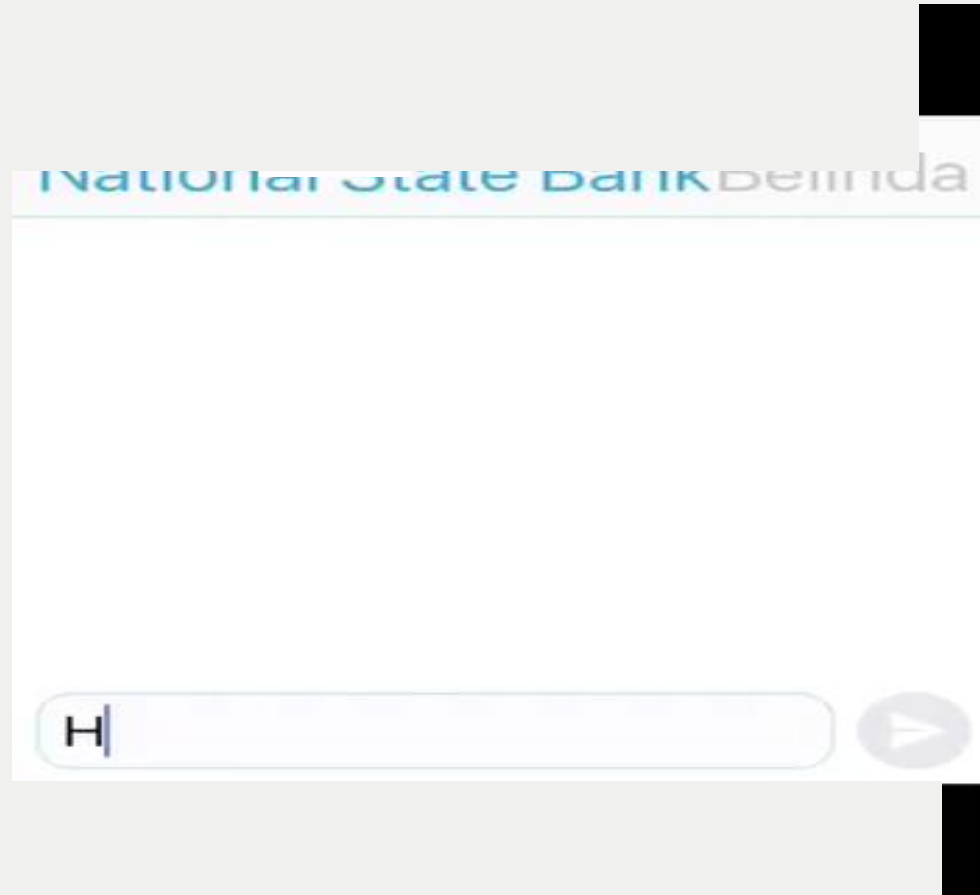
Family violence and economic abuse

Sandra Milne,
National Manager,
Financial Security Services
Good Shepherd Australia
New Zealand



Good Shepherd
Australia New Zealand

The other side of the story



Good Shepherd

Australia New Zealand 2

Family violence - definition

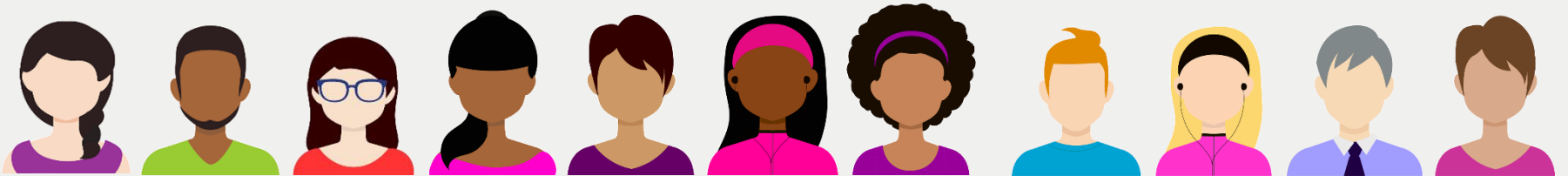
“behaviour by a person towards a family member of that person if that behaviour—

(ii) is physically or sexually abusive; or

(iii) is emotionally or psychologically abusive; or

(iv) is economically abusive; or

(v) is threatening; or (vi) is coercive; or



Family violence - definition cont.

vii) in any other way controls or dominates the family member and causes that family member to feel fear for the safety or wellbeing of that family member or another person, or

(b) behaviour by a person that causes a child to hear or witness, or otherwise be exposed to the effects of, (the above) behaviour.



Good Shepherd

Australia New Zealand 4

Economic abuse



Economic abuse is a specific type of family violence that includes causing or attempting to cause an individual to become financially dependent on another person, by obstructing their access to, or control over, resources and/or independent economic activity.

UN Women, 2012.



Good Shepherd

Australia New Zealand 5

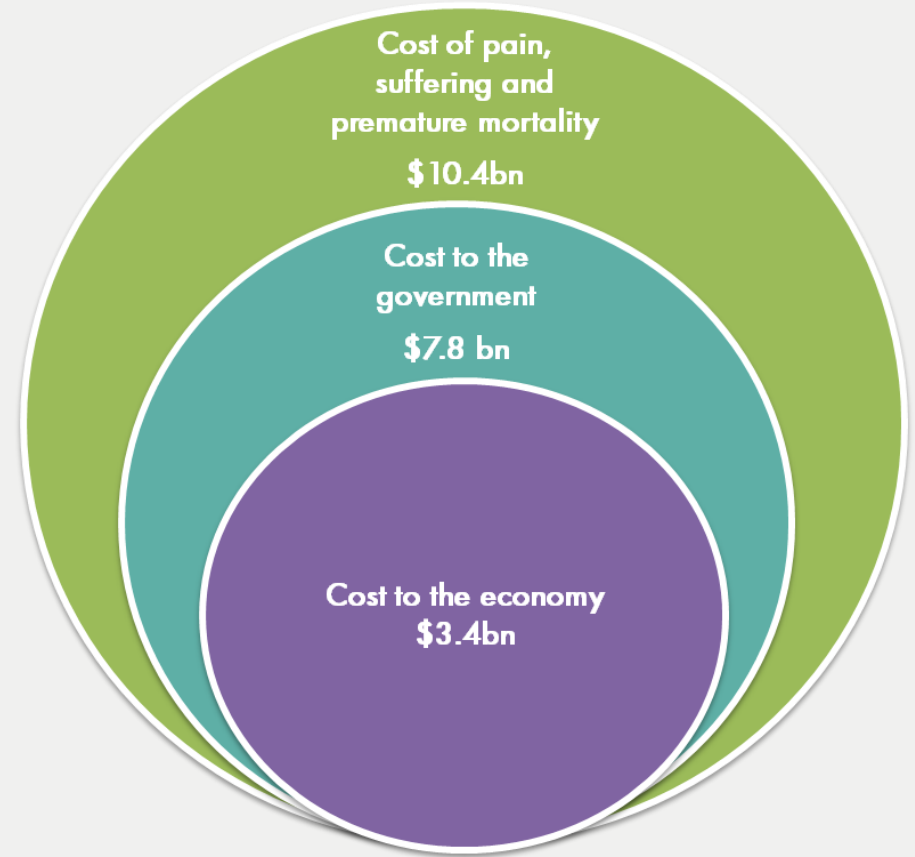
Family violence - why it matters

1 in 3 women impacted

1 woman dies each week



Financial cost



\$21.7 billion per year

References: Our Watch 2018
Price, Waterhouse Coopers Australia, 2015



Good Shepherd

Australia New Zealand 6

More than a definition...

Contributors and impacts are embedded within

- Cultural norms
- Social expectations
- Gender bias
- Systems that don't recognise or respond
- Across socio-economic groups



Brings shame, poverty, loss of confidence and social exclusion, across generations

- 'Ripple in the pond' effect across communities.

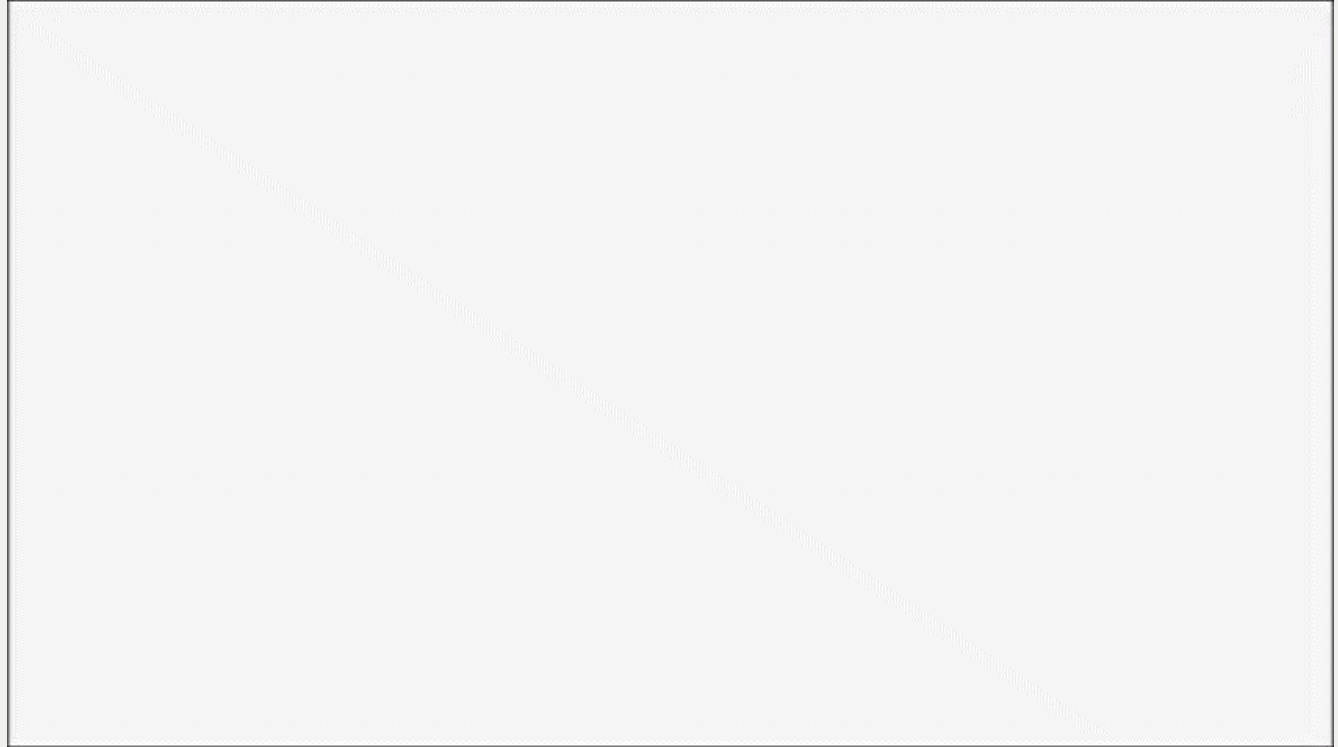


Good Shepherd

Australia New Zealand 7

Family violence in the community

Vicki's story



Family violence is not a 'personal matter' – it affects us all



Good Shepherd

Australia New Zealand 8

Gendered language

Gender inequity is a fact – but this is not just about women.

All people are needed to be a part of the response.



Sons, fathers, husbands, mates, uncles, brothers and workmates can challenge the beliefs and behaviours that excuse, justify or condone violence and inequality.



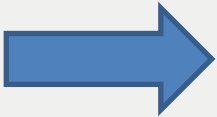
Good Shepherd

Australia New Zealand 9

The good news

Growing awareness

- Conversations
- Improved policing, legal and regulatory responses
- Corporate Social Responsibility to staff, customers and the broader community
- Cross sector partnerships



Improved systemic & community response.



Good Shepherd

Australia New Zealand 10

In Summary

Family violence is a significant issue, unrecognised and ignored for too long.

- It kills mothers, daughters, aunties, grandparents, sisters
- It kills children
- It cripples families – for generations.
- It impacts on whole communities
- It costs significant amounts of money



Its roots lie in unaddressed and inequitable social and cultural attitudes and norms, often unnoticed.



Good Shepherd

Australia New Zealand

The good news



Government, legal, community and corporate attitudes, expectations and responses are starting to change.




Today's workshop is another step in that journey.



Good Shepherd

Australia New Zealand 12



**Remember that family violence
affects us all, and we can all play a
part in creating an Australia free
from family violence**



Good Shepherd

Australia New Zealand

Disrupting the intergenerational cycle of disadvantage for women and girls.