

December 2021

ELECTRICITY GENERATION LICENCE APPLICATION



BERRYBANK 2 WIND FARM

Index

1.	General Information	0
1.1.	About Generator Licence Application	0
1.2.	About the Wind Farm	0
1.2.1.	Construction phase	0
1.2.2.	Operation phase.....	1
1.3.	Applicant details	1
1.3.1.	Name of the applicant	1
1.3.2.	Incorporation details.....	1
1.3.3.	Operational Contracts and Relationships	2
1.3.4.	Details of Shareholders.....	2
1.3.5.	Details of Prosecutions	2
1.4.	Corporate Structure.....	2
1.4.1.	Diagram of corporate structure	2
1.4.2.	Corporate Structure description	3
1.4.3.	Global Power Generation Organizational structure	6

1.4.4.	Diagram of Global Power Generation Australia (GPGA) organizational structure	6
	Summary of the experience of Key Personnel, the applicant, and related parties	7
1.4.5.	Summary of all contracts and agreements	7
1.5.	Application details	8
1.5.1.	Type of license sought	8
1.5.2.	Date from which the license is sought	8
1.5.3.	Nature and scope of operations for which the license is sought.....	8
1.5.4.	Details of current or former licenses or authorizations held.....	8
1.5.5.	Wind Farm License conditions.....	8
1.6.	Details of whether the applicant BB2WF is a fit and proper person to hold a Licence	8
1.7.	The Commission’s objectives under the Essential Services Commission Act 2001	9
1.7.1.	Essential Services Commission Act 2001.....	9
1.7.2.	Renewable Energy (Electricity) Industry Act 2000.....	9
2.	Information about technical capacity.....	10
2.1.	General.....	10
2.1.1.	Organizational chart of key personnel	10
2.1.2.	Comprehensive Business/Financial model plan	10
2.1.3.	Internal frameworks, policies and procedures	11
2.1.3.1.	Procurement Strategies	11
2.1.4.	Risk allocation and Risk Management Plan.....	12
2.1.5.	Evidence of Registration with AEMO and GPS Approval	12
2.1.6.	Australian Financial Services License	13
2.1.7.	Energy Safe Victoria	13
2.1.8.	Confirmation that all planning and Environmental approvals have been completed	13

2.1.9.	Confirmation that all land access arrangements are in place	13
2.1.10.	Evidence of agreement with the Australian Energy Market Operator.....	13
2.1.11.	Details of experience in and knowledge of the electricity industry/gas.....	14
3.	Information about financial viability	15
3.1.	Public statement.....	15
3.2.	Commercial in Confidence	15
3.2.1.	Significant contracts	15
3.2.2.	Annual report.....	16
3.2.3.	Standard & Poor's or other acceptable rating	16
3.2.4.	Statements	16
	Financial statements have been provided in Appendix 14.	16
3.2.5.	Guarantees in place	17
3.2.6.	Shareholder register.....	17
3.2.7.	Financial model that supports the business plan	17
4.	List of Attachments.....	17

1. General Information

1.1. About Generator Licence Application

Berrybank 2 Asset Pty Ltd as trustee for Berrybank 2 Asset Trust is applying for a license to generate, sell and supply energy. As required by the Electricity Industry Act 2000, this application is being made and is in accordance with the *Guidance to applications for Electricity Industry and Gas Industry Licences, 2020*.

1.2. About the Wind Farm

Berrybank 2 Wind Farm (BB2WF) is located next to Berrybank Wind Farm. The latter comprises of an operating wind farm under the Service and Maintenance agreement with Vestas and referred to as the Berrybank Wind Farm Stage 1 (BBWF1). BBWF1 has been constructed and consists of 43 x V136-4.3MW Vestas Wind Turbine Generators (WTG) and a 275kV/33kV substation.

Berrybank 2 Wind Farm (BB2WF) is a 192 MW (installed capacity) project near Berrybank, located both in Corangamite and Golden Plains LGAs in the Southwest district of the State of Victoria. The wind farm will be comprised of 26 x V136-4.2 MW Vestas Wind Turbines with a hub height of 112 m, maximum tip height of 180 m and a rotor diameter of 136 m. Connection to the Victorian Transmission Network will be done through a new 33/220 kV onsite substation, a 220 kV, 7 km long transmission line and a new 220 kV terminal station adjacent to the existing 220 kV Ballarat-Terang transmission line.

The Project is backed by the ACT Government via an executed Deed of Entitlement, for a 10-years term, has commenced in September 2020.

1.2.1. Construction phase

The construction stage is being managed under procedures and directions from GPG owned company, Gas Natural Fenosa Ingeniería y Desarrollo de Generación (GNFidg) and GHD as a local consulting engineering company, both of them acting as the Owner's Engineer. These two companies are working together looking after the Environmental Monitoring, Health and Safety requirements, as well as the supervision, monitoring and auditing of the construction and commissioning activities of the project on the basis of two main contracts to be managed:

- Full EPC contract with Tier-1 Wind Turbines Manufacturer, VESTAS : responsible for (i) the supply, installation, testing and commissioning of the wind turbines and (ii) the engineering, procurement and construction of the Civil Works and Electrical infrastructure of the wind farm, including the 33kV switchgear located in the wind farm area of the 33/132kV substations (local balance of plant (BoP)).
- The remainder of the grid connection infrastructure (33/220kV power transformers, 220kV switchyard and 220kV dual circuit transmission line to tie into the existing 220kV Ballarat-Terang transmission line), is delivered by AusNet Services (non contestable scope) and TransGrid (contestable scope).

1.2.2. Operation phase

During the five (5) initial years of operation, the Operation and Maintenance (O&M) services will be performed by the Original Equipment Manufacturer (OEM), VESTAS and then it will be transferred to our own technical O&M team during different stages (see chart below).

The O&M of the grid connection infrastructure will be AusNet Services and TransGrid's scope, as part of a Provision of Services scheme. It is also anticipated that for both civil and electrical maintenance and for Health, Safety and environmental monitoring, a local contractor will be engaged over the complete operational life of the Project.

1.3. Applicant details

1.3.1. Name of the applicant

Title of project	Berrybank 2 Wind Farm (BB2WF)
Legal name	Berrybank 2 Asset Pty Ltd as trustee for Berrybank 2 Asset Trust
Registered Address/Postal Address	Suite 4, Level 3, 24 Marcus Clarke Street, Canberra, ACT 2600
Place of registration	Victoria
Australian Business Number/Australian Company Number	ABN: 66 420 407 293
Telephone	02 6274 3200
Name and title of proponent's authorised agent	David Santo Tomás (Director) and Guillermo Alonso Castro (Director)
Contact Person	David Santo Tomás
Email	dsanto@globalpower-generation.com

1.3.2. Incorporation details

Berrybank 2 Asset Pty Ltd as trustee for Berrybank 2 Asset Trust, BB2WF, (ABN 66 420 407 293) was registered with ASIC in the State of Canberra ACT on 17 of July 2020.

Following information related the Registration of the BB2WF, has been included in **Appendix 1**

- BB2WF Certificate of Registration in ASIC

1.3.3. Operational Contracts and Relationships

Following the execution of the Support Agreements with the ACT State in **Appendix 2.1** , attached as commercial-in-confidence in **Appendix 2.2**, BB2WF signed an EPC contract (Engineering, Procurement and Construction Contract) and an Operation and Maintenance Contract with Vestas Australian Wind Technology Pty Ltd for the construction and operation and maintenance of the Wind Farm.

1.3.4. Details of Shareholders

BB2WF is a fully owned subsidiary of Global Power Generation Australia Pty Ltd (GPGA) which is the Australian subsidiary of Global Power Generation, S.A.U. (GPG).

GPG is the international generation arm of Naturgy Group, a multinational electricity and gas integrated utility with a presence in more than 30 countries worldwide and with 15,000 employees. Naturgy Group has a long history of successful renewable energy projects around the world, building more than 2,000 MW of green energy capacity across wind, solar, hydro, biomass and other renewable energy sources. GPGA is currently developing a portfolio of 1,300MW+ of wind farm projects across Australia.

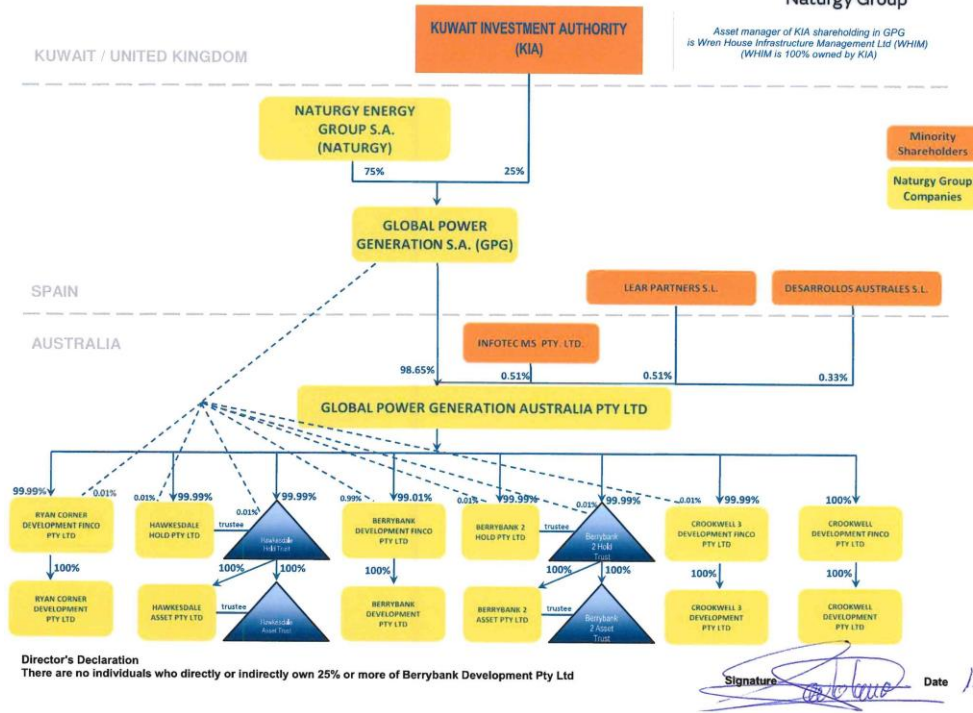
1.3.5. Details of Prosecutions

There are no prosecutions to our knowledge.

1.4. Corporate Structure

1.4.1. Diagram of corporate structure

GPG Australia (GPGA)



Director's Declaration
There are no individuals who directly or indirectly own 25% or more of Berrybank Development Pty Ltd

Signature: *[Signature]* Date: 12/07/2021

1.4.2. Corporate Structure description

Berrybank 2 Asset Pty Ltd

Berrybank 2 Asset Pty Ltd as trustee for Berrybank 2 Asset Trust is a special purpose vehicle established to develop, construct and operate the Berrybank 2 Wind Farm (BB2WF). BB2WF is wholly owned by Global Power Generation Australia (GPGA) an Australia registered company.

Global Power Generation Australia Pty Ltd (GPGA)

Global Power Generation Australia Pty Ltd (GPGA) is the Australian subsidiary of Global Power Generation (GPG). GPG owns directly a 98.65% of GPGA shares through its affiliated Spanish partner Global Power Generation, S.A. (GPG), the holding company established by Naturgy Group (formerly Gas Natural Fenosa GNF) in 2014 to manage its overseas power generation business. There are three additional minority shareholders that own the remaining 1.35% of GPGA.

GPGA is the local holding company representing GPG in Australia and owns 100% of the shareholding of Berrybank 2 Asset Pty Ltd as trustee for Berrybank 2 Asset Trust that owns the rights, permits, licences and easements of Berrybank 2 Wind Farm.

Global Power Generation (GPG)

Naturgy Group (formerly Gas Natural SDG), and the Kuwait Investment Authority (KIA) signed an agreement in 2015 to undertake a share capital increase in GPG, wholly underwritten by KIA, assuming control of 25% of the subsidiary.

The operation, which concluded early October 2015 after obtaining the necessary authorisations, represents a partnership between the multinational power company and a sound investment partner. This was created with the aim of expediting the development of its international power generation expansion plans, which, for the medium term, include construction and operating an additional 5 GW of capacity in international markets.

KIA is the oldest sovereign wealth fund in the world, tracing its roots to the Kuwait Investment Board, which was established in 1953. KIA is responsible for the management and administration of Kuwait's General Reserve Fund and the Future Generation Fund, as well as all other funds entrusted to it by the Kuwait Minister of Finance for and on behalf of the State of Kuwait. KIA is one of the ten largest sovereign wealth funds in the world and has in excess of US\$400 billion in assets under management globally. KIA holds a number of direct investments in Australia, including the Rialto Tower in Melbourne.

Wren House Infrastructure Management Ltd (WHIM) is a company incorporated in the United Kingdom wholly owned by the KIA, which will manage KIA's investment in GPG and will act as KIA's representative for all purposes in connection with GPG.

Additional information on both GPG and its mother Group Naturgy can be found in their respective corporate web pages: www.globalpower-generation.com, and www.naturgy.com.

Naturgy Energy Group's composition of the board of directors is shown below

Director	Nature of the post
CHAIRMAN & CEO: REYNÉS MASSANET, Francisco	Executive
DIRECTORS:	
ADELL RAMÓN, Ramón	Independent ⁴
ALCÁNTARA GARCÍA-IRAZOQUI, Enrique	Proprietary ¹
BELIL CREIXELL, Francisco	Independent
CHADWICK, Lucy	Proprietary ³
ESTAPÉ, Isabel	Proprietary ¹
HERRERO STARKIE, Helena	Independent
RAO, Rajaram	Proprietary ³
RIOJA S.à.r.l. (Mr Javier de Jaime Guijarro)	Proprietary ²
SANTIAGO PONSA, Claudi	Independent
SAINZ DE BARANDA RIVA, Pedro	Independent
THEATRE DIRECTORSHIP SERVICES BETA, S.à.r.l. (Mr José Antonio Torre de Silva López de Letona)	Proprietary ²

¹ developed by Criteria Caixa, S.A.U.

² developed by Rioja Acquisition S.à.r.l.

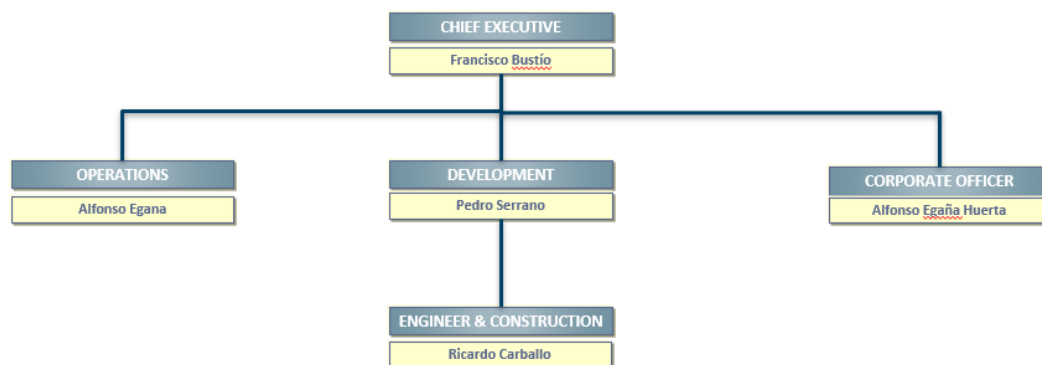
³ developed by GIP III Canary 1 S.à r.l. (GIP)

⁴ Coordinating Director

Further information can be found in Appendix 3

1.4.3. Global Power Generation Organizational structure

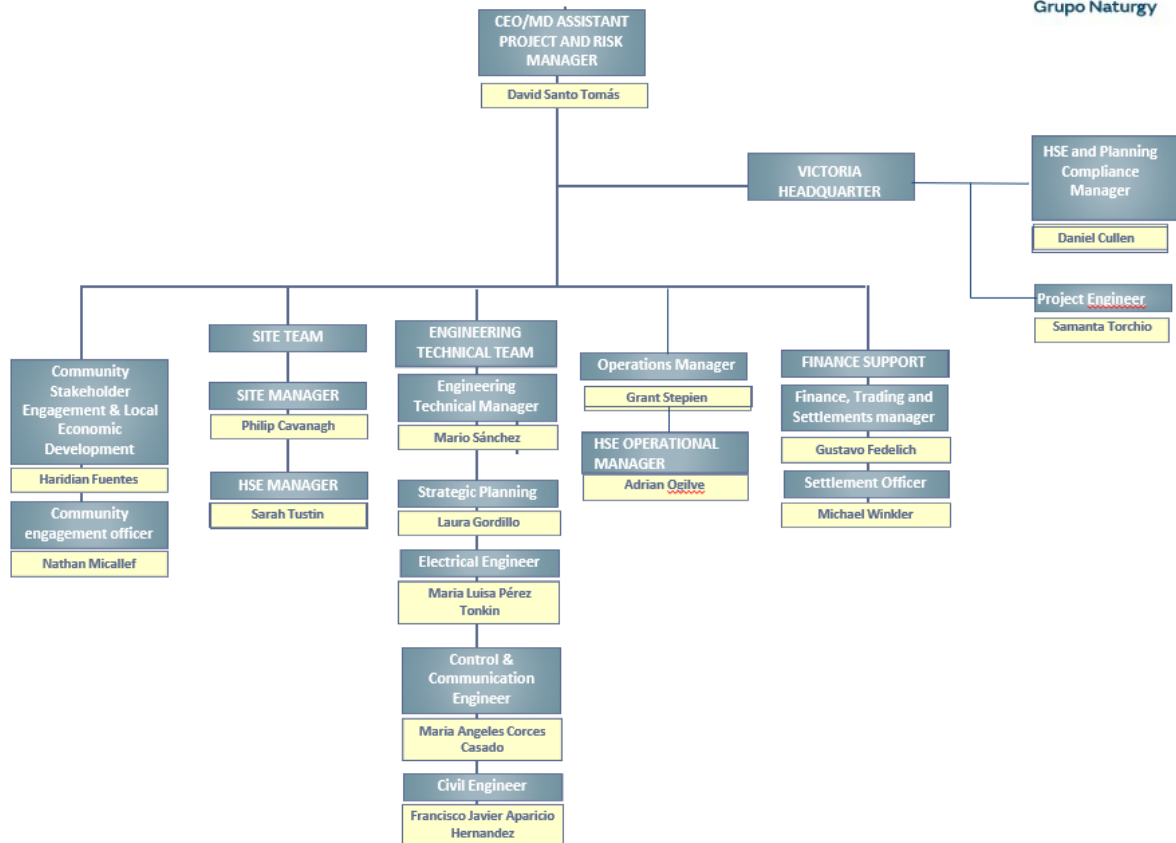
GPG Australia



1.4.4. Diagram of Global Power Generation Australia (GPGA) organizational structure

GPGA`s composition of the management and other key personnel is listed below:

BERRYBANK 2 WIND FARM ORGANISATIONAL CHART



Summary of the experience of Key Personnel, the applicant, and related parties

Refer to commercial-in-confidence document in Appendix 4 for Key Personnel Experience.

1.4.5. Summary of all contracts and agreements

All key contracts and agreements have been executed.

Following contracts and agreements have been attached as commercial-in-confidence in Appendix 2:

- Executed ACT Deed of Entitlement (2.1)
- Executed Engineer, Procurement and Construct with Vestas. (2.2)
- Executed Operation and maintenance contract with Vestas. (2.2)
- Asset Management agreement with GPGA (2.3)
- Executed Construction Management Service agreement with GPG (2.3)
- Executed Corporate Services Agreements with GPGA (2.3)
- Executed Project agreement with TransGrid. (2.4)
- Executed Connection agreement with TransGrid. (2.4)

- Draft of the Project Construction and Coordination Deed with AEMO (2.6)
- Draft of the Use of system agreement with AEMO. (2.6)
- Executed Land Agreements. (2.7) OK

1.5. Application details

1.5.1. Type of license sought

Electricity Generation License.

1.5.2. Date from which the license is sought

The license is sought on 1 March 2022.

1.5.3. Nature and scope of operations for which the license is sought

This license is sought for the operation on the Berrybank 2 Wind Farm (BB2WF). The wind farm is a 109.2 MW (installed capacity) project near Berrybank, located both in Corangamite and Golden Plains LGAs in the Southwest district of the State of Victoria. The wind farm will be comprised of 26 x V136-4.2 MW Vestas Wind Turbines with a hub height of 112 m, maximum tip height of 180 m and a rotor diameter of 136 m. Connection to the Victorian Transmission Network will be done through a new 33/220 kV onsite substation, a 220 kV, 7 km long transmission line and a new 220 kV terminal station adjacent to the existing 220 kV Ballarat-Terang transmission line. This Wind Farm forms part of the Berrybank Wind Farm located in the same area.

1.5.4. Details of current or former licenses or authorizations held

BB2WF has never held other license and has never applied unsuccessfully for other licenses in Victoria or other jurisdictions. Currently, BB2WF is in the process for application as a Generator in the NEM.

For the Australian Project Berrybank Wind Farm, which is owned by Berrybank Development Pty Ltd, an associated company under Global Power Generation Australia, was held appropriate licenses for operation. AEMO approval letter as MSS Generator is attached in Appendix 5

For the Australian Project Crookwell 2 Wind Farm, which is owned by Crookwell Development Pty Ltd, an associated company under Global Power Generation Australia, was held appropriate licenses for operation. AEMO approval letter as MSS Generator is attached in Appendix 5

1.5.5. Wind Farm License conditions

BB2WF is not applying for non-standard license conditions

1.6. Details of whether the applicant BB2WF is a fit and proper person to hold a Licence

As far as reasonably known, none of the directors of BB2WF of any entity than can exert control over BB2WF, GPGA or GPG with significant managerial responsibility or influence have:

- had declared bankrupt
- had their affairs placed under administration
- been disqualified from managing a company
- been subject to a debt judgments or insolvency proceedings including administration, liquidation or receivership in connection with the affairs of a company

- e) been charged with fraud, theft or any other criminal offence.
- f) been involved in any material breaches of obligations regulated by the Essential Services Commission
- g) been prosecuted for any offences or had any enforcement action taken under any state, territory, Commonwealth or foreign legislation
- h) been refused a license authorization or had been restricted, suspended or revoked any such license.

1.7. The Commission’s objectives under the Essential Services Commission Act 2001

1.7.1. Essential Services Commission Act 2001

The granting of a Generation License to Berrybank Wind Farm 2 would be consistent with the Commission’s objectives as are remarked in the Essential Services Commission Act 2001, section 8, as shown below:

1. In performing its functions and exercising its powers, the objective of the Commission is to promote the long-term interests of Victorian consumers.
2. Without derogating from subsection 1., in performing its functions and exercising its powers in relation to essential services, the Commission must in seeking to achieve the objective specified in subsection (1) have regard to the price, quality and reliability of essential services.

The applicant has collaborated with arguably the world’s most successful Original Equipment Manufacturer (OEM) of Wind Turbines and the Transmission Network Services TransGrid and Ausnet.

BB2WF, being owned and developed by Berrybank 2 Asset Pty Ltd as trustee for Berrybank 2 Asset Trust as the subsidiary of an experienced parent company, Global Power Generation Australia (GPGA), has executed contracts and agreements which will provide energy stability to Victorian consumers and are offering a highly competitive bid that will position Victoria as a leader in new energy technology manufacturing and maximise the benefits of the Project to local businesses and communities.

The Project is underpinned by the Operation and Maintenance centre HUB in Geelong, Victoria. Please, refer to schedules 5 and 6 located in **Appendix 2.1** of the Deed of Entitlement with ACT where you can find GPGs Community Engagement Plan and ACT Engagement Plan.

1.7.2. Renewable Energy (Electricity) Industry Act 2000

BB2WF proposes a facility which establishes a single generating system that is able to qualify as a “large-scale” renewable energy project under the Renewable Energy (Electricity) Act 2000, and therefore be eligible to create a register LGCs.

Please refer to the attached commercial-in-confidence document in **Appendix 6**. Including a technical description of the Wind Farm.

2. Information about technical capacity

2.1. General

2.1.1. Organizational chart of key personnel

The corporate structure and the organizational chart of Naturgy Energy Group and GPG have been included in section 1.4

Global Power Generation (GPG), considered the international generation arm of Naturgy (formerly Gas Natural Fenosa), is a company that specialises in the business of generating electrical energy which develops and manages generation assets with a global approach, using hydraulic, solar, wind and fossil fuel technologies.

GPG accumulates extensive experience in the development and management of generation plants and the backing of a large market leader like Naturgy, the experience of its team, and a clear focus on growth reinforce GPG as a company with the capacity of a world leader.

Global Power Generation Australia (GPGA), as the Australian subsidiary of GPG, covers all the value chain: development, engineering, construction and operation focusing on ACT, New South Wales and Victoria.

A summary of the skills and experience of the directors and other key personnel is included in commercial-in-confidence in Appendix 4.

The operational and technical capability is supported by the following organisational chart detailed in 1.4.4

2.1.2. Comprehensive Business/Financial model plan

A highly detailed financial model has been prepared considering realistic costs based on binding offers received from turbine suppliers and contractors.

Our Parent Company, Naturgy has a rigorous project financing governance process for its internal finance approval. BB2WF has secured support letters from several financial institutions and also commitment from Naturgy to fund the Project's construction phase from its own balance sheet. Naturgy and Global Power Generation have specialized financial modelling units with extensive experience in the elaboration of electricity generation project business models.

In particular, Global Power Generation modelling team has been involved in tender transactions in Mexico, Panama, Dominican Republic, Brazil, Chile, Indonesia, Australia, over the last 4 years. Moreover, the modelling team involved in Berrybank 2 Wind Farm participated in various recent green-energy electricity generation auctions launched by the Australian Capital Territory and, in particular, in the elaboration of Crookwell II Wind Farm business plan which was one of the two projects awarded in ACT's 2016 auction.

Based on the above-mentioned experience in the analysis of this kind of projects, BB2WF/GPGA does not consider necessary the revision of the financial model by an independent firm.

2.1.3. Internal frameworks, policies and procedures

2.1.3.1. Procurement Strategies

Our commitments –especially those we have made to society and the environment– lead to a host of policies, criteria and codes that define their development guidelines and guarantee their compliance. Such values as ethics, integrity, transparency and a concern for the environment form part of our strategic outlook and corporate culture

www.globalpower-generation.com/our-commitments/policies-and-codes-of-conduct

Ensuring the health and safety of employees, suppliers, partner companies and society as a whole is one of the commitments made by GPG and Naturgy in their Corporate Responsibility Policy and constitutes one of the company's main strategic lines of action.

www.globalpower-generation.com/our-commitments/health-safety/

In accordance with the environmental principles of the Naturgy Corporate Responsibility Policy, our key action lines aim to ensure the company complies with legislation by reducing its environmental impact, mitigating climate change, preserving local biodiversity and preventing pollution

www.globalpower-generation.com/our-commitments/environment

We implement an action plan as part of all our projects to develop a sustainable and mutually beneficial relationship with the communities we influence

www.globalpower-generation.com/our-commitments/community

Naturgy and its subsidiaries have received numerous public awards and recognitions that highlight the value of their action in the fields of social responsibility, sustainability, the environment and financial control, as well as its work-life balance and diversity policies

www.globalpower-generation.com/our-commitments/acknowledgements

Following procedures are included in **Appendix 8** (commercial in confidence)

- Naturgy's Corporate Responsibility Policy.
- NG.00003 Health and Safety Global Policy
- NG.0008 Supplier general policy
- PG00002 Manual for the Integrated Management System
- PG00002- Addendum for Operation and Maintenance
- NG.000021.Global Cyber Security policy

2.1.4. Risk allocation and Risk Management Plan

A comprehensive initial Risk register and detailed Project Risk Management Plan prepared for development, construction, operational and decommissioning phases of the Berrybank 2 Project is included in the commercial-in-confidence document in **Appendix 9** according to the ISO31000 standard.

2.1.5. Evidence of Registration with AEMO and GPS Approval

Berrybank 2 Wind Farm is connected to the Grid via the existing 220 kV Ballarat-Terang (BATS-TGTS) transmission line, 55 km from BATS, through a 7 km twin conductor double circuit transmission line. The connection point was proposed to be a breaker and a half substation which on one side is connected to TGTS 220 kV and on the other side is connected to BATS 220 kV.

The following figure shows an overview on the connection of Berrybank 2 Project to the Victorian transmission network



BB2WF has been registered previously as an Intendent Participant and currently is in the process to be registered as a Generator. BB2WF has been granted with the Participant ID: **BERBANKW**.

Regarding the connection to the Victorian grid, it is expected AEMO to release, the letter 5.3.10 confirming the acceptance of the Performance Standard for generating Plant late February.

Currently General Performance Standard (GPS) to be approved in February 2022 is attached in Appendix 10.

2.1.6. Australian Financial Services License

BB2WF does not offer advice products or services that would require an Australian Financial Services License. All activities that would require an Australian Financial Services License will be procured through a License Provider

2.1.7. Energy Safe Victoria

Refers to the **Appendix 11** for evidence of liaison with ESV. Vestas a Principal Contractor for Berrybank 2 Wind Farm construction entered in contact with Energy Safe Victoria.

2.1.8. Confirmation that all planning and Environmental approvals have been completed

The Project has all the planning permit approval since February 2018 (refer to **Appendix 12**)

- Planning Permit 20092820A (Golden Plains)
- Planning Permit 20092821A (Corangamite)
- Berrybank transmission line permit PA1700309

The approvals required a number of Management Plans and Secondary Consents to be prepared and endorsed prior to the commencement of the Construction. These Plans and secondary Consent has been obtained and construction under both started in April 2019. Refer to the link below for access to the Planning Permits and endorsed plans:

<http://www.unionfenosa.com.au/vic-berrybank-project-documents/>

Following endorsement letter have been included in **Appendix 12**

- 20190327-Signed - Letter to Proponent - Endorsed TMP
- 20190405-Signed - Letter to Proponent - Endorsed EMP
- 20190417-Signed- Letter to Proponent - Secondary Consent & Endorsed various docs

2.1.9. Confirmation that all land access arrangements are in place

Refers to commercial in confidences Land contracts in commercial as confidence in appendix 2.7

2.1.10. Evidence of agreement with the Australian Energy Market Operator

All the required connection agreements with AEMO will be signed in March 2022 (commercial in confidence in appendix 2.6)

- Project Construction and Coordination Deed
- Use of system Agreements,
- TNSP Side Deed

Following procedures are on Place with AEMO

Document Title
Energy Markets Regulatory Compliance Policy
Energy Markets Regulatory Compliance Register
Contacts
AEMO Market Settlement Process / Reconciliation
AEMO Prudentials and Credit Support
Energy Metering Access, Inspection, Testing and Strategy
Access to MarketNet VPN connection
Change of MarketNet Password
MMS Market Bidding Procedure
MMS Market Availability Procedure
Crookwell Control Room Response to AEMO
Annual AEMO Statement of Opportunities participant submission
Generator Performance Standards Template management
Energy Markets Breach Procedure
Notification of change in Licences Directors/Secretaries to AEMO
Semi -Scheduled dispatch control testing
Review and Testing of Generator Performance Standards
Energy Markets Breach Register
Regulatory notification of Change to Office Bearers
AEMO Response Log
A Guide To The Role Of The Responsible Person
Technical Guide to Electricity IT Systems
Electricity Market Management Systems Access Policy and Procedure
Guide to User Rights Management
Notice of Non-Compliance with Registered Performance Standards
Guide to Electricity Information Systems
Template for Generator Compliance Programs
Infolite Intermittent Generator Management System
Guide to Intermittent Generation
Metrology Procedure: Part A v5.30
Metrology Procedure: Part B v5.30
NEM Prudential Dashboard - Support Information
NEM Prudential Supervision Process
NEM Settlements Process
Re-Bidding and Technical Parameters Guideline

2.1.11. Details of experience in and knowledge of the electricity industry/gas

GPG is a leading company in practically all generation technologies. The company considers efficiency to be the main tool that guarantees the energy supply and contributes to the

competitiveness of its clients. We maintain this leadership with a strong commitment to innovation as a means of generating electricity in a reliable, sustainable way.

GPG participates in the whole value chain of the generation business, bringing its experience and knowledge to bear in all the phases of the development and exploitation of its own generation activities. Beginning with the identification and development of the projects, continuing with their design and construction, and finally operating and managing their assets for their whole operating life.

GPG participates in the whole value chain of the generation business, bringing its experience and knowledge to bear in all the phases of the development and exploitation of its own generation activities. Beginning with the identification and development of the projects, continuing with their design and construction, and finally operating and managing their assets for their whole operating life.

Please refer to **appendix 13** for a detailed description of GPG experience

Related to Australia market, GPGA and one of their subsidiary Crookwell Development Pty Ltd (CDPL) have developed, constructed and currently operating (since 1st December 2019), Crookwell 2 Wind Farm in New South Wales This Wind Farm was successful awarded in the last Australia Capital Territory (ACT) Renewable Energy Auction in 2016. Adding to that, GPGA and their subsidiary Berrybank Development Pty Ltd have developed, constructed and currently operating Berrybank 1 Wind Farm in Victoria.

3. Information about financial viability

3.1. Public statement

As mentioned before, BB2WF is wholly owned by GPGA and ultimately by Naturgy Energy Group. Both companies have pledged its continuing support as of the date of this statement

3.2. Commercial in Confidence

3.2.1. Significant contracts

Following contracts and agreements have been attached as commercial-in-confidence in Appendix 2:

- Executed ACT Deed of Entitlement. (2.1)
- Executed Engineer, Procurement and Construct with Vestas. (2.2)
Executed Operation and maintenance contract with Vestas. (2.2)
- Draft Asset Management agreement with GPGA (2.3)
- Executed Construction Management Service agreement with GPG (2.3)
- Executed Corporate Services Agreements with GPGA (2.3)
- Executed Project agreement with TransGrid. (2.4)
- Executed Connection agreement with TransGrid. (2.4)
- Executed Project Construction and Coordination Deed with AEMO (2.6)
- Executed Use of system agreement with AEMO. (2.6)
- Executed Land Agreements. (2.7)

3.2.2. Annual report

Please refer to appendix 14 -commercial-in-confidence which comprises the last Audited financial Statements for Berrybank 2 Asset Pty Ltd and Global Power Generation Pty Ltd.

3.2.3. Standard & Poor's or other acceptable rating

Extensive information about Naturgy Group rating is included in the following Link https://www.naturgy.com/en/shareholders_and_investors/financial_information/rating

	Long term	Forecast	Review date
S&P	BBB	Stable	09/08/2021
	BBB	Negative	17/02/2021
	BBB	Stable	13/05/2020
	BBB	Stable	23/03/2019
	BBB	Stable	18/07/2018
	BBB	Stable	16/03/2018
	BBB	Stable	07/12/2017

	Long term	Forecast	Review date
Fitch	BBB	Stable	29/10/2021
	BBB	Stable	28/07/2020
	BBB	Stable	28/01/2020
	BBB	RWN	29/07/2019
	BBB	Stable	01/08/2018
	BBB+	Negative	31/10/2017
	BBB+	Negative	02/08/2016

3.2.4. Statements

Financial statements have been provided in **Appendix 14**.

3.2.5. Guarantees in place

Followings Bank Guarantees have been put in place

- Parent Company Guarantee in favor of TransGrid
- Parent Company Guarantee in favor of VESTAS
- Bank Guarantee No: GO411193073 in favor of Corangamite Shire Council
- Bank guarantee No: GO431692092 in favor of Golden Plain Shire Council

These guarantees have been attached as commercial-in-confidence in Appendix 16

3.2.6. Shareholder register

BB2WF is 100% owned by Global Power Generation Australia Pty Ltd (GPGA) as listed in ASIC which is the Australian subsidiary of Global Power Generation, S.A.U. (GPG).

GPG owns directly a 98.65% of GPGA and there are three additional minority shareholders that own the remaining 1.35% of GPGA.

GPGA shareholding:

Shareholder	Percentage (%)
Global Power Generation Australia Pty Ltd	99,99
Lear Partners SL	<0.1
Desarrollos Australes SL	< 0.1
Infotec MS Pty Ltd	< 0.1

Please refer as commercial-in-confidence to appendix 17 to the BB2WF

3.2.7. Financial model that supports the business plan

Please refer to the commercial-in-confidence **Appendix 7**. This documentation was provided to the ACT government and approved by them.

4. List of Attachments

The following attachments have been provided as commercial-in-confidence information. All the provided documents are restricted and are not made policy available. The content is confidential (where indicated) and its release would be injurious to the Project and all the involved parties.

The Commission is not allowed to release the sections marked as commercial-in-confidence without a prior consent of BB2WF:

- Appendix 1: BB2WF registration ASIC
- Appendix: Contracts and agreements (commercial in confidence)

- Executed VRET support agreements. (2.1)
 - Executed Engineer, Procurement and Construct with Vestas. (2.2)
 - Executed Operation and maintenance contract with Vestas. (2.2)
 - Asset Management agreement with GPGA (2.3)
 - Executed Construction Management Service agreement with GPG (2.3)
 - Executed Corporate Services Agreements with GPGA (2.3)
 - Executed Project agreement with TransGrid. (2.4)
 - Executed Connection agreement with TransGrid. (2.4)
 - Executed Project Construction and Coordination Deed with AEMO (2.6)
 - Executed Use of system agreement with AEMO. (2.6)
 - Executed Land Agreements. (2.7)
- Appendix 3: Board Directors
 - Appendix 4: Key Personnel (commercial in confidence)
 - Appendix 5: Crookwell 2 Wind Farm Generator and Berrybank Development Wind Farm registration (commercial in confidence).
 - Appendix 6: Technical Description
 - Appendix 7: Financial Model (commercial in confidence)
 - Appendix 8: GPG procedures (commercial in confidence)
 - Appendix 9: Risk Management Plan (commercial in confidence)
 - Appendix 10: AEMO (commercial in confidence)
 - Appendix 11: ESV liaison evidence
 - Appendix 12: Planning Permits and Plan approvals
 - Appendix 13: GPG Experience
 - Appendix 14: Financial statements (commercial in confidence)
 - Appendix 16: Guarantees (commercial in confidence)
 - Appendix 17 Share register (commercial in confidence)